



Participatory Communications

Approaches

- Bottom-up
- Inclusive
- Informed participation

CDD will balance participatory processes leading to people empowerment, and the generation of tangible results leading to measurable improvements in the social economic well being of the target beneficiaries

Contact details :
Office No (14), CDD Secretariat
Department of Rural Development
Ministry of Livestock, Fisheries and Rural
Development, Nay Pyi Taw, Myanmar.
Tel/Fax + 95 67 409413. www.cdd.drdsmyanmar.org

Institutional Structure



Ministry of Livestock, Fisheries
and Rural Development

Department of Rural Development



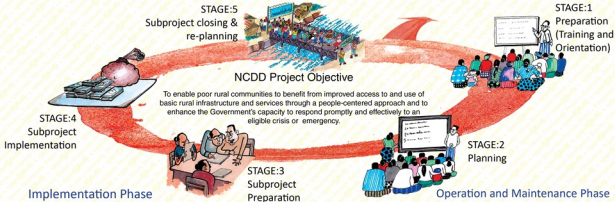
National Community Driven Development Project

The Project will test and develop operational modalities to enable rural communities to lead the process of identifying needs, and prioritizing activities that will most effectively address such needs.

IDA Grant No: HB14-MM

November 2013

Community Project Cycle



Project Components

- Component 1: Community Block Grants
- Component 2: Facilitation and Capacity Development
- Component 3: Knowledge and Learning
- Component 4: Implementation Support
- Component 5: Emergency Contingency Response

